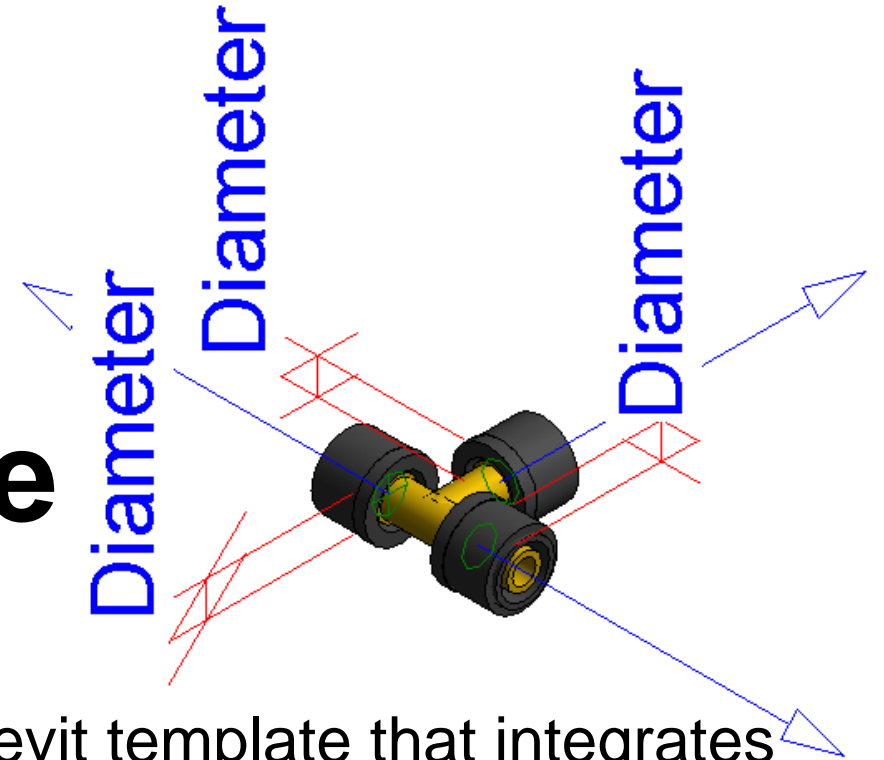


Revit Template Guideline for FASTLOC LX

This guideline provides instructions for creating a Revit template that integrates FASTLOC LX products efficiently, ensuring consistent standards and enhanced productivity in BIM projects.



Introduction & Setup

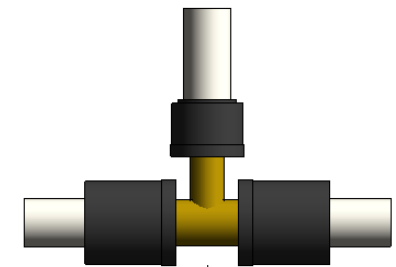
- **Purpose of the Template:**
 - Efficient integration of FASTLOC LX products in Revit projects.
 - Ensures consistent standards and comprehensive integration, including the regions where the products are available.
- **Preparation:**
 - **Software Requirements:** Compatible with Revit 2023 or later.
- **Setup Language & Region:**
 - Adjust language settings and regional standards (units, dimension styles, pipe system labels).
 - Add labels in the respective languages and select product availability per region.

Regions & Product availability

The regions where FASTLOC LX products are available and how these are integrated into the template.

Family Types

Type name:	FSL T-Piece LX CZ
	FSL T-Piece LX CZ
Search param	FSL T-Piece LX ES
	FSL T-Piece LX FR
	FSL T-Piece LX HU
	FSL T-Piece LX IT
Constraints	FSL T-Piece LX PL
	FSL T-Piece LX RO
Default Elev	FSL T-Piece LX SK
	FSL T-Piece LX U
Graphics	

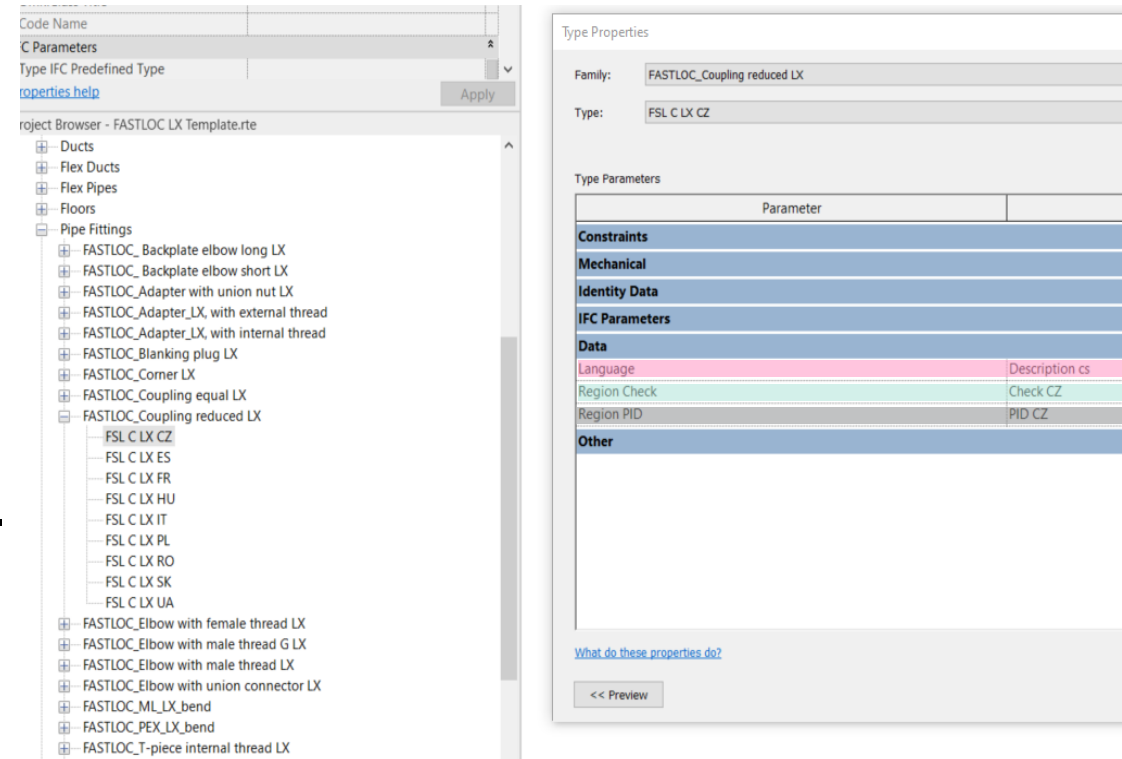


Te FASTLOC 20 - 16 - 20
13601661001

Setup Language & Region

To create a Family Type for a different region:

- Open the property panel of the Revit family and duplicate the existing family type.
- Update the following parameters:
 - Set the "Language" parameter to: "Description" + "Language Code".
 - Set the "Region Check" parameter to: "Check" + "Country Code".
 - Set the "Region PID" parameter to: "PID" + "Country Code".



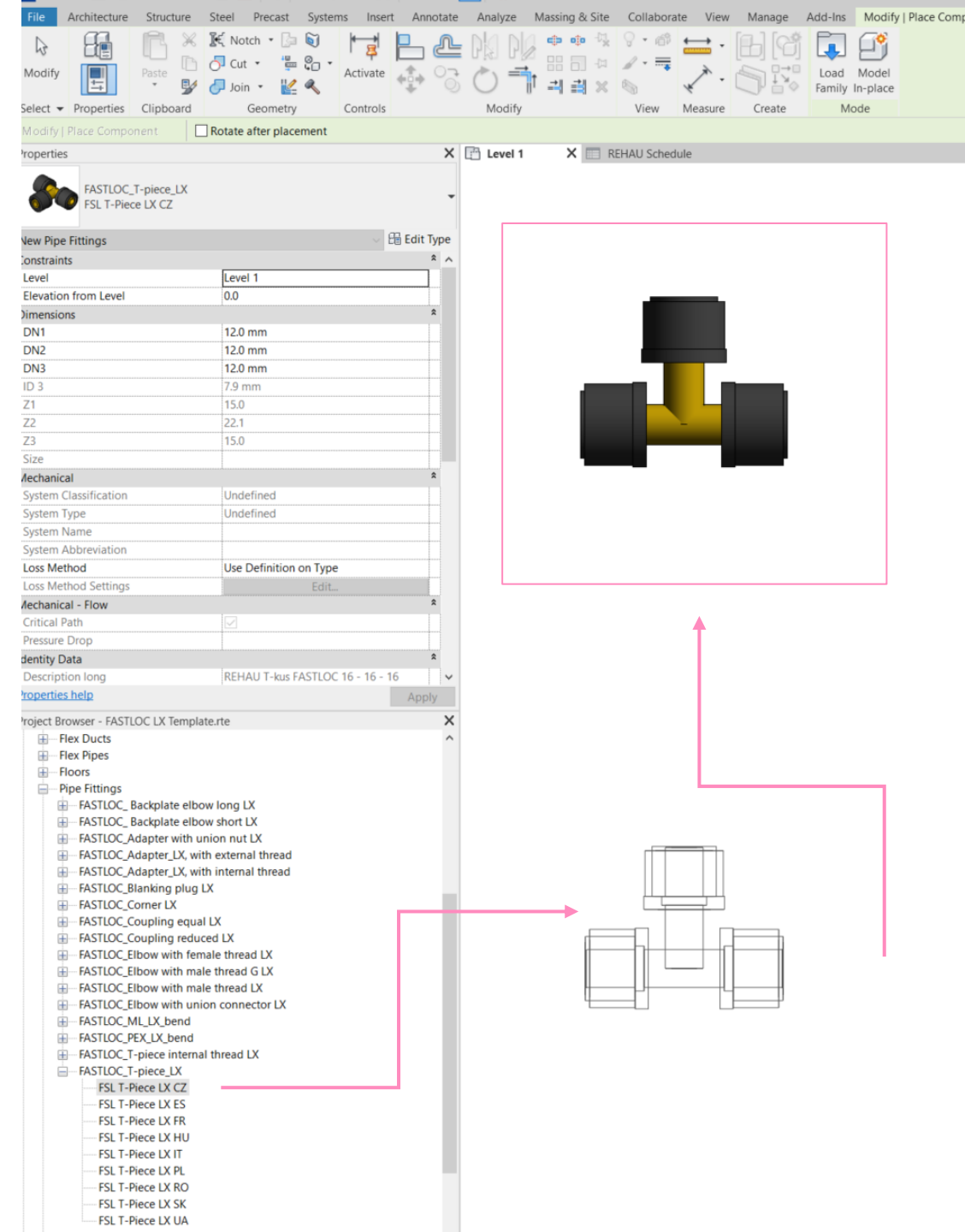
REHAU schedule

- The REHAU schedule includes key parameters like **Type**, **Description Long**, **PID**, **Region Check**, **Region PID**, **Manufacturer** and **Count** to classify products, verify regional availability and track quantities in the project efficiently.

<REHAU Schedule>			
A	B	C	
Type	Description long	PID	
FSL A C external CZ	REHAU přechod FASTLOC 16 - R 1/2	13602011001	C
FSL A C external CZ	REHAU přechod FASTLOC 16 - R 1/2	13602011001	C
FSL A C external CZ	REHAU přechod FASTLOC 20 - R 1/2	13602021001	C
FSL A C external CZ	REHAU přechod FASTLOC 20 - R 1/2	13602021001	C
FSL A C external CZ	REHAU přechod FASTLOC 20 - R 3/4	13602031001	C
FSL A C external CZ	REHAU přechod FASTLOC 20 - R 3/4	13602031001	C
FSL A C external CZ	REHAU přechod FASTLOC 25 - R 3/4	13602041001	C
FSL A C external CZ	REHAU přechod FASTLOC 25 - R 3/4	13602041001	C
FSL A C external CZ	REHAU přechod FASTLOC 32 - R 1	13602051001	C
FSL A C external CZ	REHAU přechod FASTLOC 32 - R 1	13602051001	C
FSL A C external CZ	REHAU přechod FASTLOC 40 - R 1 1/4	13602061001	C
FSL A C external ES	Enlace rosca macho FASTLOC 16 - R 1/2	13602011001	C
FSL A C external ES	Enlace rosca macho FASTLOC 16 - R 1/2	13602011001	C
FSL A C external ES	Enlace rosca macho FASTLOC 20 - R 1/2	13602021001	C
FSL A C external ES	Enlace rosca macho FASTLOC 20 - R 1/2	13602021001	C
FSL A C external ES	Enlace rosca macho FASTLOC 20 - R 3/4	13602031001	C
FSL A C external ES	Enlace rosca macho FASTLOC 20 - R 3/4	13602031001	C
FSL A C external ES	Enlace rosca macho FASTLOC 25 - R 3/4	13602041001	C
FSL A C external ES	Enlace rosca macho FASTLOC 25 - R 3/4	13602041001	C
FSL A C external ES	Enlace rosca macho FASTLOC 32 - R 1	13602051001	C
FSL A C external ES	Enlace rosca macho FASTLOC 32 - R 1	13602051001	C
FSL A C external ES	Enlace rosca macho FASTLOC 40 - R 1 1/4	13602061001	C
FSL A C external FR	REHAU Raccord Droit FASTLOC 16-1/2"M	13602011001	C
FSL A C external FR	REHAU Raccord Droit FASTLOC 16-1/2"M	13602011001	C
FSL A C external FR	REHAU Raccord Droit FASTLOC 20-1/2"M	13602021001	C
FSL A C external FR	REHAU Raccord Droit FASTLOC 20-1/2"M	13602021001	C
FSL A C external FR	REHAU Raccord Droit FASTLOC 20-3/4"M	2 2 1 1	C
FSL A C external FR	REHAU Raccord Droit FASTLOC 20-3/4"M	3 2 1 1	C
FSL A C external FR	REHAU Raccord Droit FASTLOC 25-3/4"M	13602041001	C
FSL A C external FR	REHAU Raccord Droit FASTLOC 25-3/4"M	13602041001	C
FSL A C external FR	REHAU Raccord Droit FASTLOC 32 1"M	13602051001	C

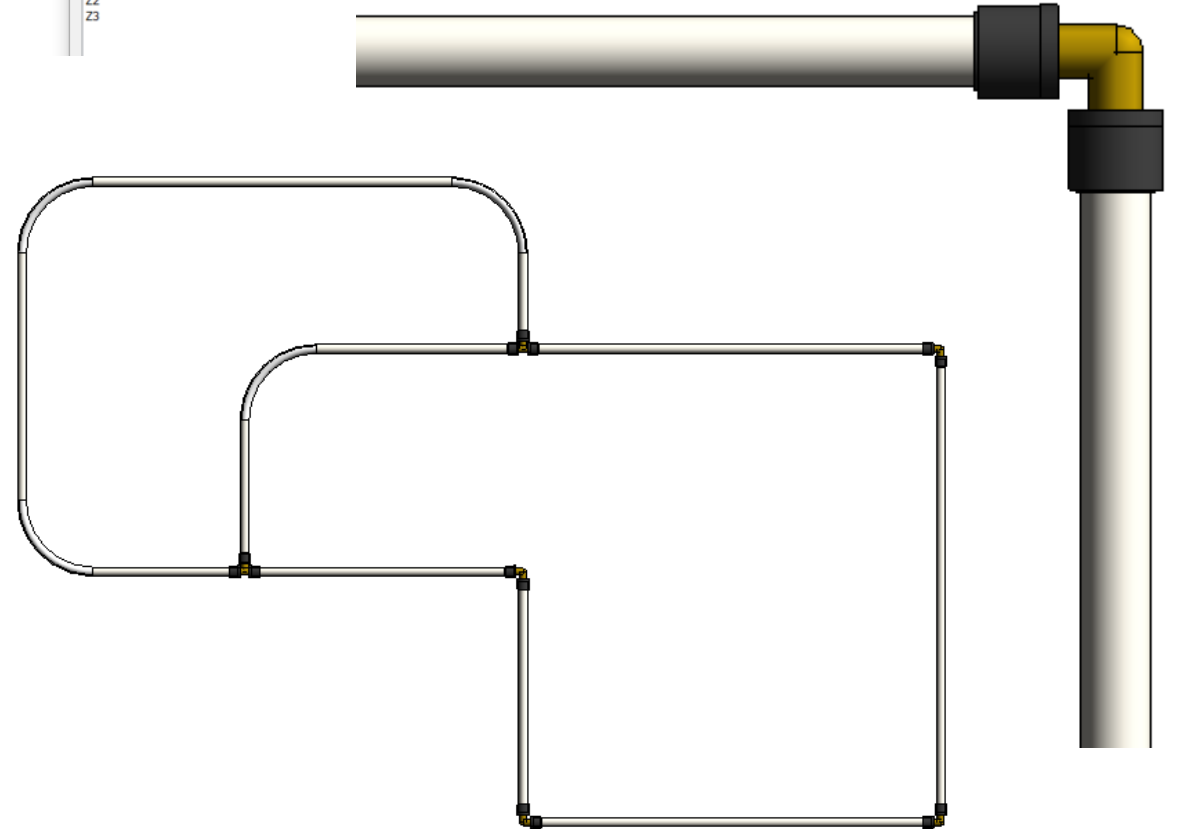
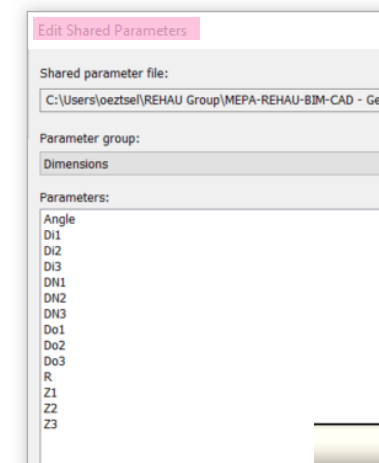
Importing Pipes & Fittings

- All FASTLOC LX pipe and fitting families are already included in the template under Pipe Fittings.
 - Open the template and navigate to **Project Browser > Families > Pipe Fittings** to find the preloaded components.
 - To use a component, simply drag and drop it into your project.



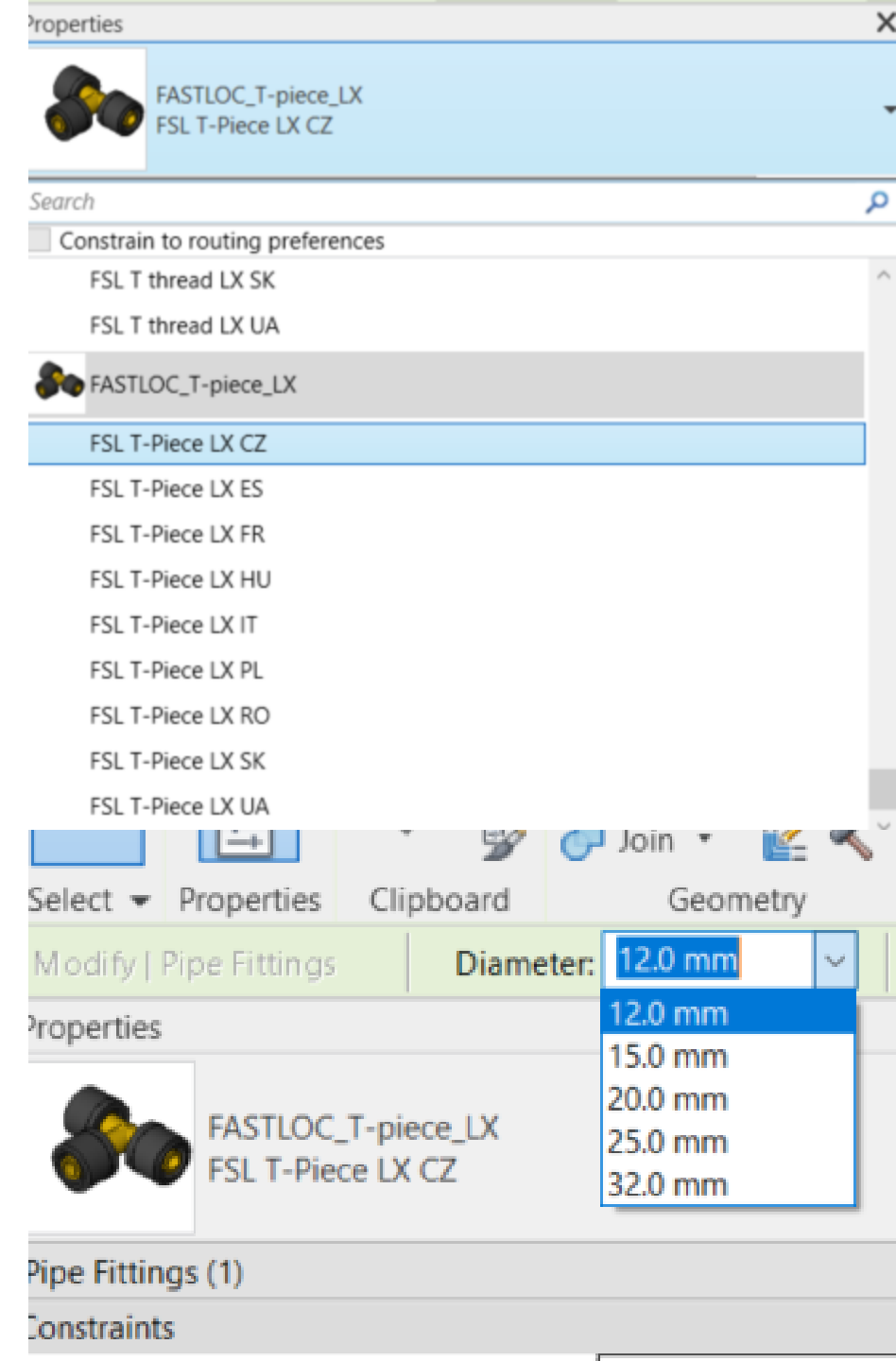
Optimizing Family Setup in Revit

- **Assigning Parameters:**
 - Ensure families have parameters for diameter, material, etc.
 - Validate **shared parameters** for consistency across projects.
- **Testing Connections:**
 - Test all FASTLOC LX products to ensure proper fitting connections in the template.



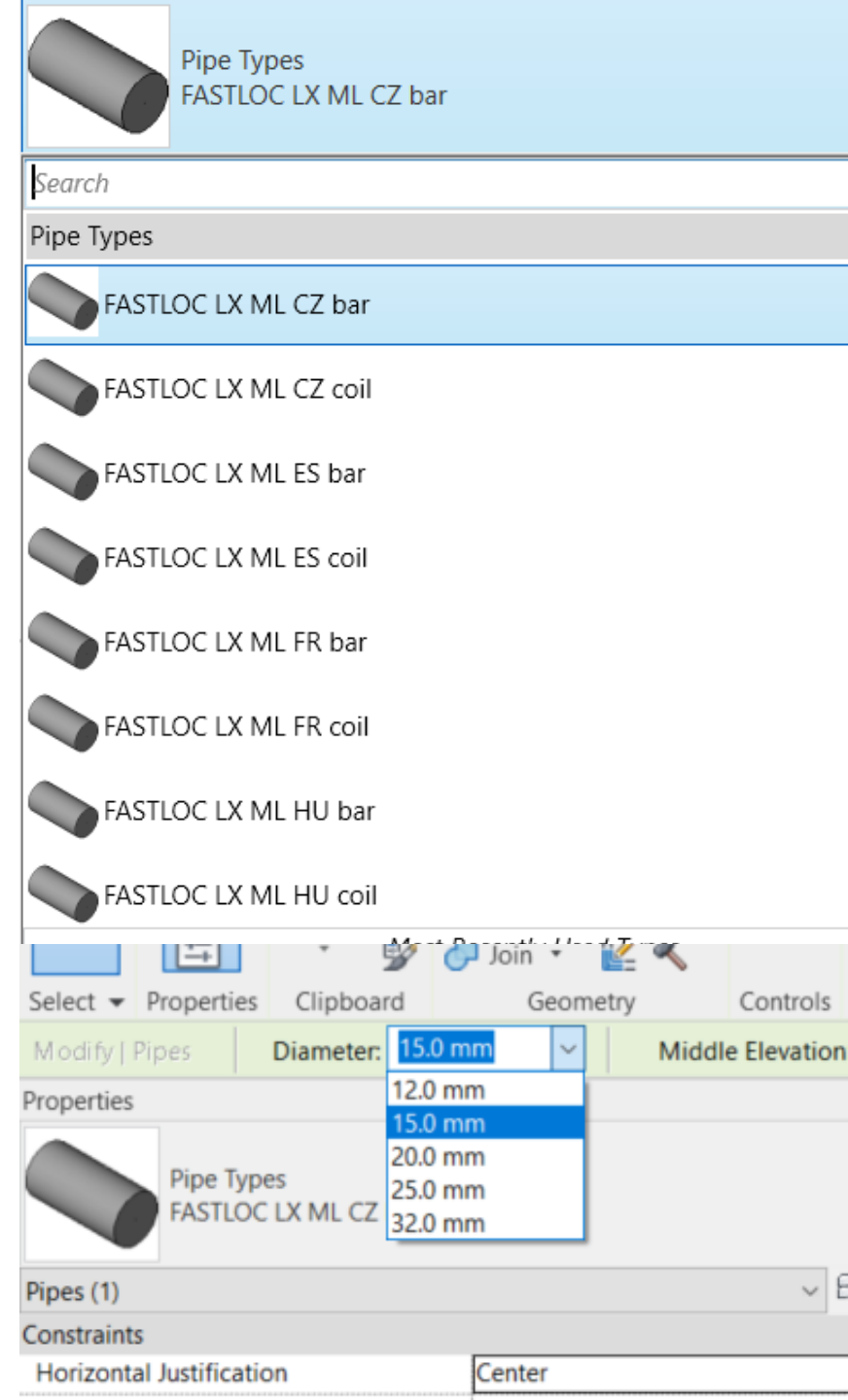
Assigning Parameters

- Includes predefined nominal diameters and materials for FASTLOC LX fittings.
- Configured for seamless integration and immediate use.



Pipe dimensions & types

- Includes predefined nominal diameters and materials for FASTLOC LX pipes.
- Configured for seamless integration and immediate use.



Pipe schedule

- The pipe schedule includes the following parameters: **Type**, **Diameter**, **Outer Diameter**, **Length**, **Manufacturer** and **Material**.

<Pipe Schedule>						
A	B	C	D	E	F	G
Type	Segment Descriptio	Diameter	Outside Diameter	Inside Diameter	Length	Manufacture
FASTLOC LX ML CZ bar		12.0 mm	16 mm	12 mm	3017 mm	REHAU
FASTLOC LX ML CZ bar		15.0 mm	16 mm	20 mm	4268 mm	REHAU
FASTLOC LX ML CZ bar		20.0 mm	25 mm	20 mm	2785 mm	REHAU
FASTLOC LX ML CZ bar		25.0 mm	32 mm	26 mm	2459 mm	REHAU
FASTLOC LX ML CZ bar		32.0 mm	40 mm	32 mm	1857 mm	REHAU
FASTLOC LX ML CZ coil		12.0 mm	16 mm	12 mm	3017 mm	REHAU
FASTLOC LX ML CZ coil		15.0 mm	16 mm	20 mm	4409 mm	REHAU
FASTLOC LX ML CZ coil		20.0 mm	25 mm	20 mm	2792 mm	REHAU
FASTLOC LX ML CZ coil		25.0 mm	32 mm	26 mm	3097 mm	REHAU
FASTLOC LX ML ES bar		12.0 mm	16 mm	12 mm	2904 mm	REHAU
FASTLOC LX ML ES bar		15.0 mm	16 mm	20 mm	3796 mm	REHAU
FASTLOC LX ML ES bar		20.0 mm	25 mm	20 mm	2715 mm	REHAU
FASTLOC LX ML ES bar		25.0 mm	32 mm	26 mm	2346 mm	REHAU
FASTLOC LX ML ES bar		32.0 mm	40 mm	32 mm	1857 mm	REHAU
FASTLOC LX ML ES coil		12.0 mm	16 mm	12 mm	3088 mm	REHAU
FASTLOC LX ML ES coil		15.0 mm	16 mm	20 mm	3535 mm	REHAU
FASTLOC LX ML ES coil		20.0 mm	25 mm	20 mm	2721 mm	REHAU
FASTLOC LX ML ES coil		25.0 mm	32 mm	26 mm	2984 mm	REHAU
FASTLOC LX ML FR bar		12.0 mm	16 mm	12 mm	2917 mm	REHAU
FASTLOC LX ML FR bar		15.0 mm	16 mm	20 mm	4226 mm	REHAU
FASTLOC LX ML FR bar		20.0 mm	25 mm	20 mm	2881 mm	REHAU
FASTLOC LX ML FR bar		25.0 mm	32 mm	26 mm	2459 mm	REHAU
FASTLOC LX ML FR bar		32.0 mm	40 mm	32 mm	1857 mm	REHAU
FASTLOC LX ML FR coil		12.0 mm	16 mm	12 mm	3017 mm	REHAU
FASTLOC LX ML FR coil		15.0 mm	16 mm	20 mm	4409 mm	REHAU
FASTLOC LX ML FR coil		20.0 mm	25 mm	20 mm	2887 mm	REHAU
FASTLOC LX ML FR coil		25.0 mm	32 mm	26 mm	3097 mm	REHAU